

# 1a

146/152

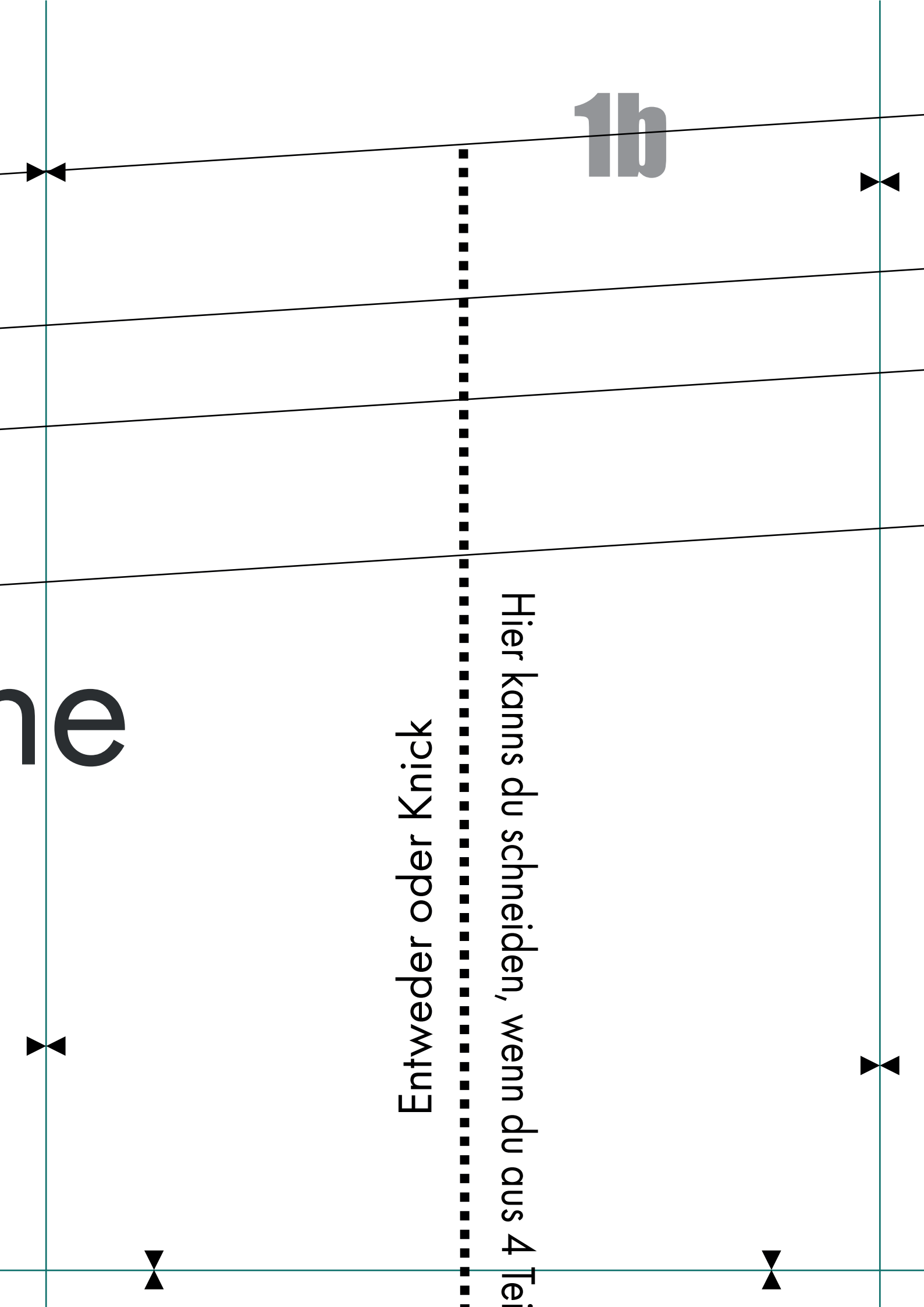
134/140

122/128

110/116

**vorne**





1b

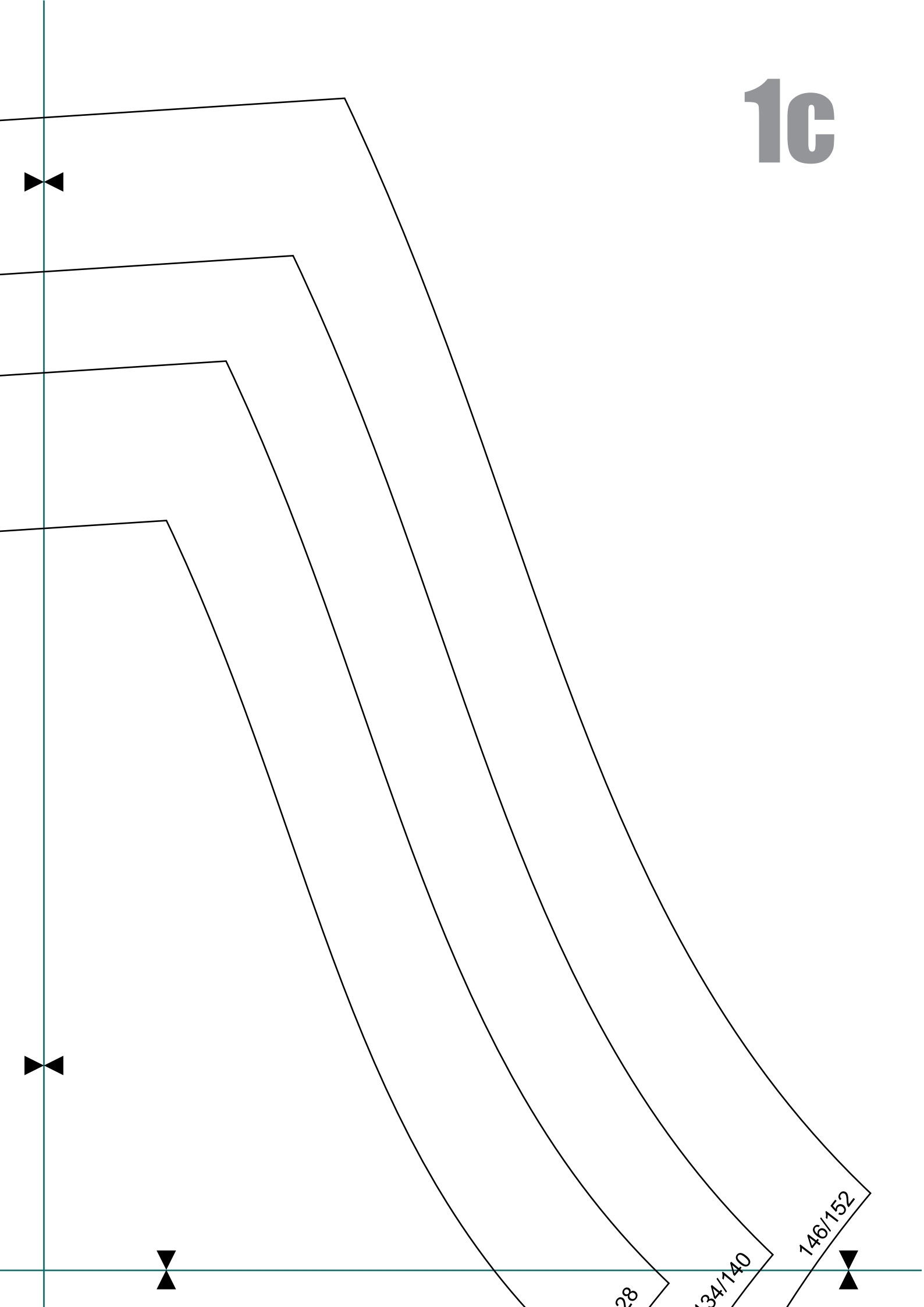
Hier kanns du schneiden, wenn du aus 4 Teil

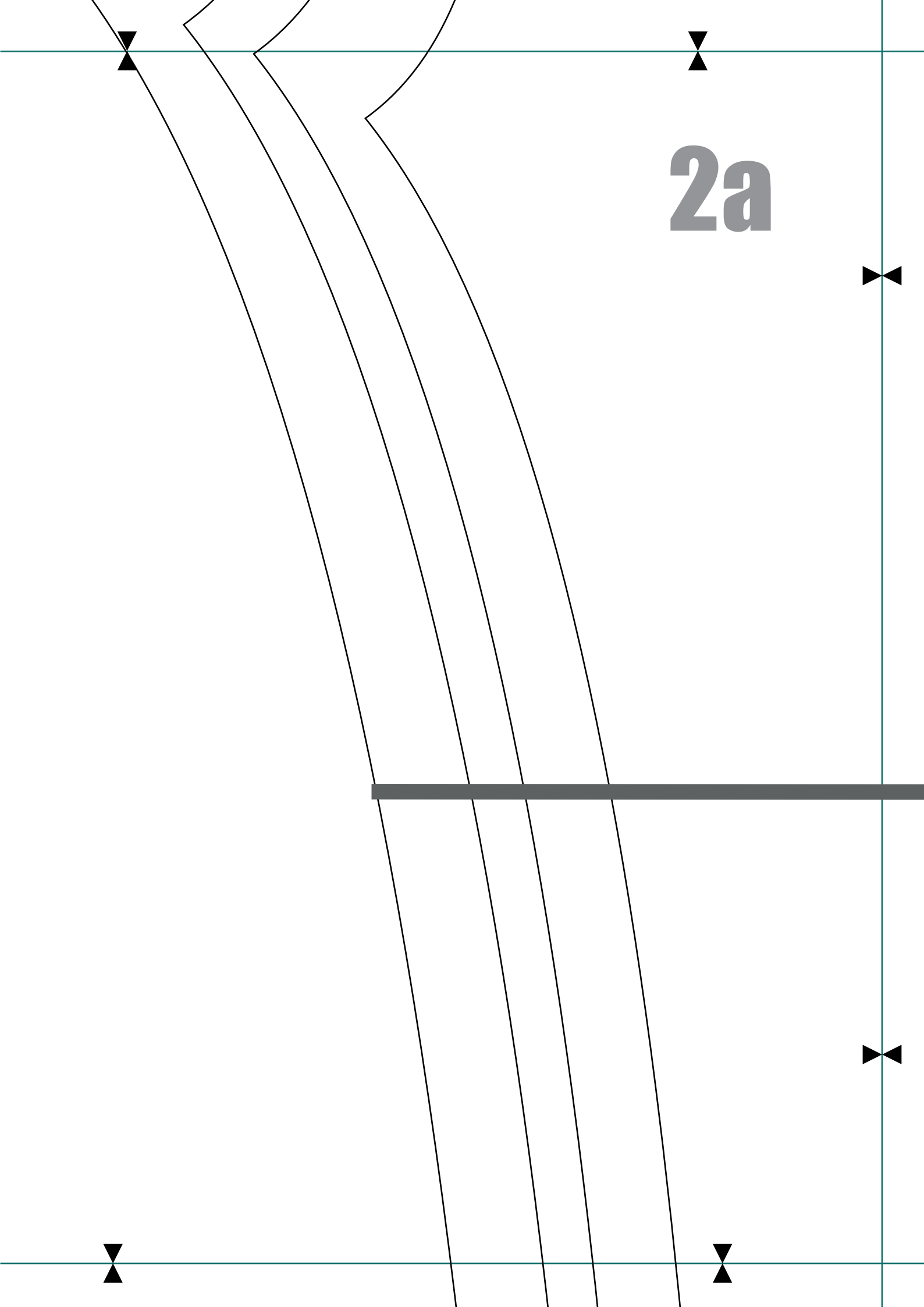
Entweder oder Knick

e



1c





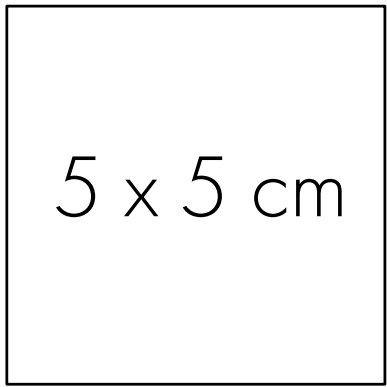
$2a$

4 Teilen eine Hose näht

2b

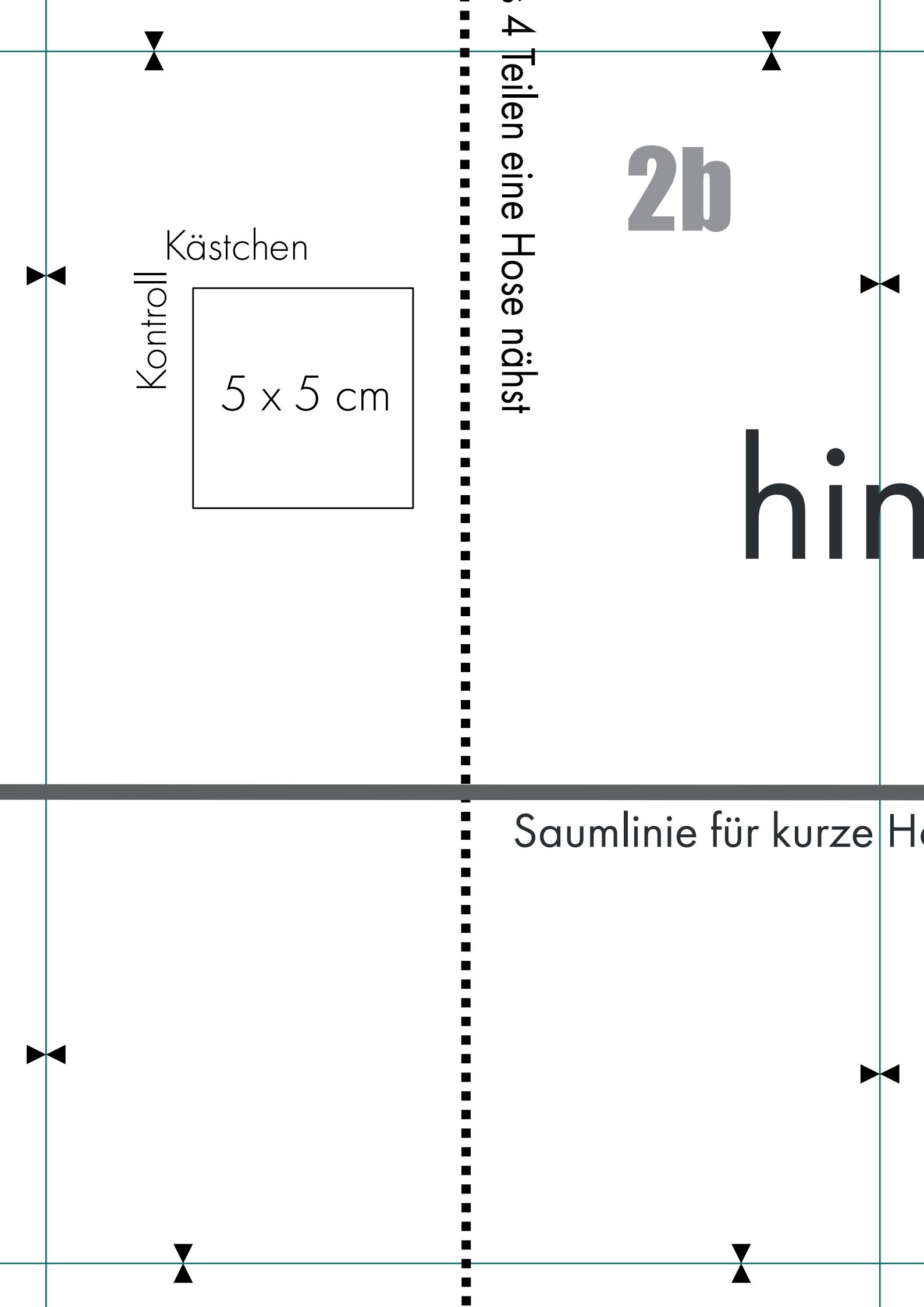
hin

Kästchen  
Kontroll



5 x 5 cm

Saumlinie für kurze Ho



# int

ze Hosen



# 2c

3a

110/116

122/128



Buntspechte

**Mitwachshose**

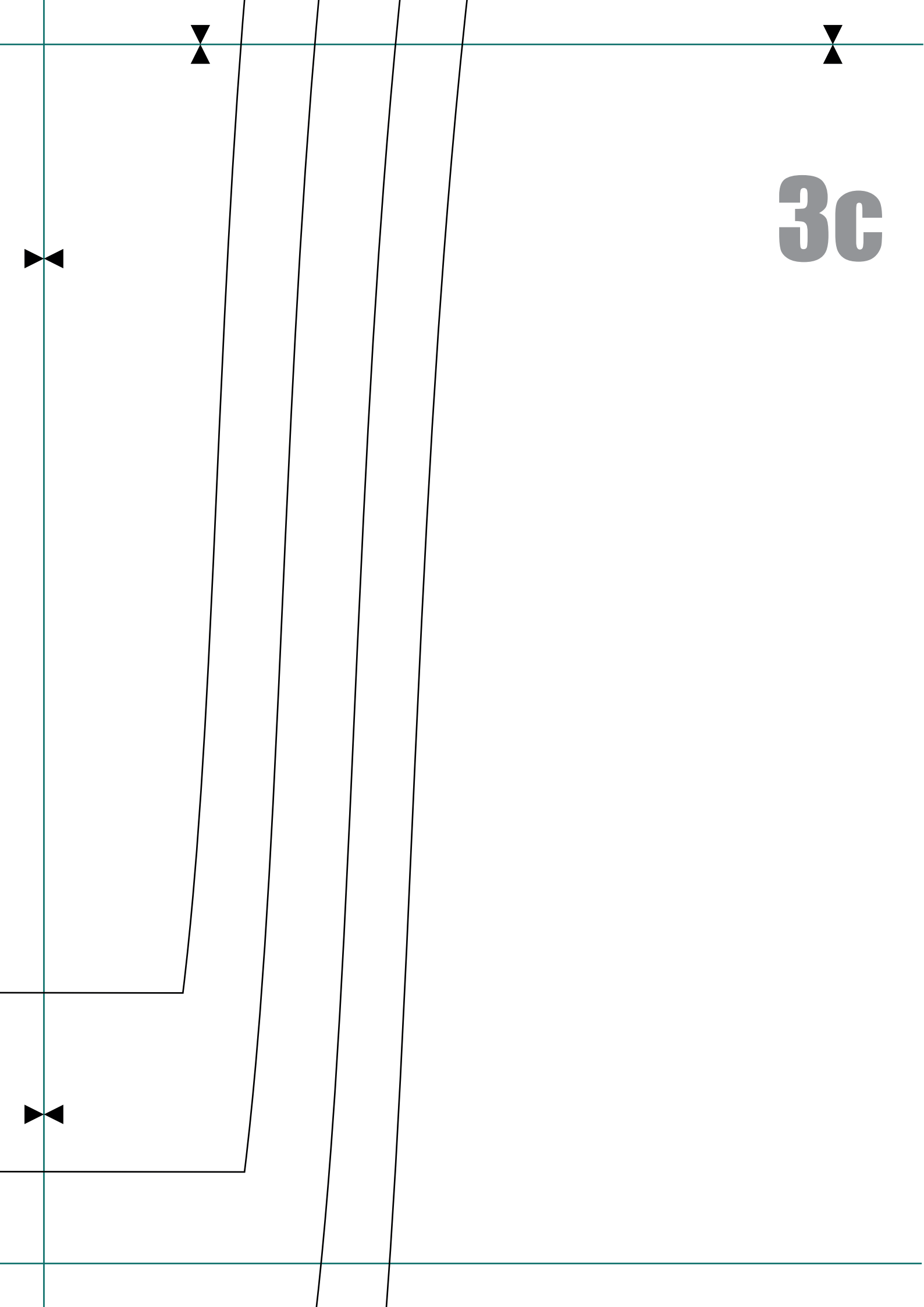
copyright

3b

↑ Fadenlauf







**3c**



134/140

4a

146/152



146/152

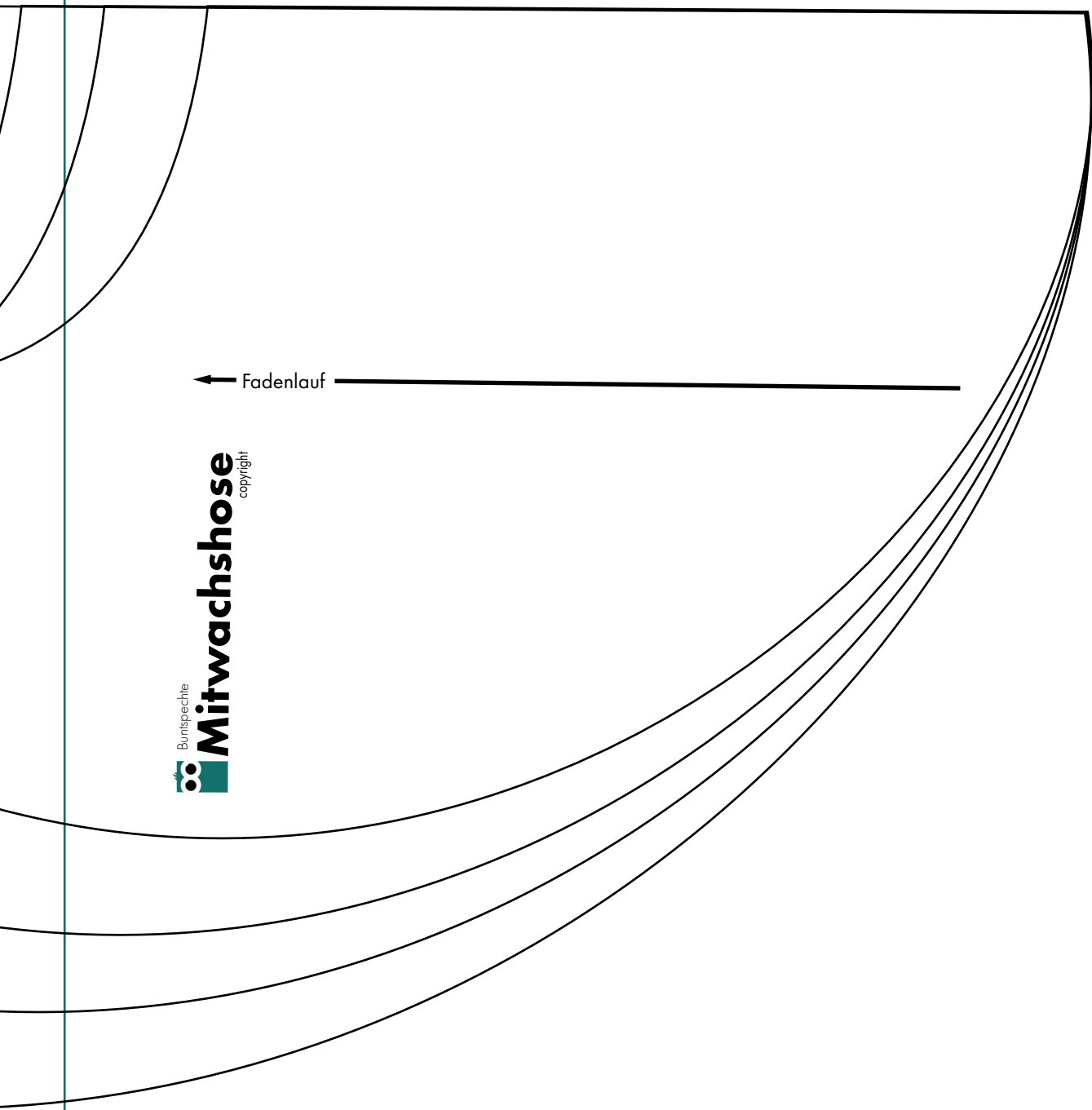
134/140

122/128

110/116



4b



Buntspechte  
**Mitwachshose**  
copyright

↑ Fadenlauf

**4c**

